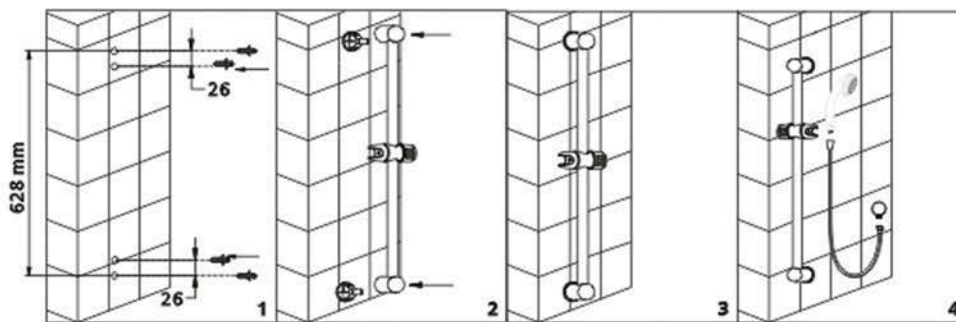


SHOWER SET

Congratulations for purchasing this quality shower set. Our product is manufactured to the highest quality under strict quality control procedures.

Shower Set



INSTALLATION INSTRUCTIONS

1. Mark and drill holes according to the dimensions indicated in FIGURE ;
Distance: 628mm
Holes DIA 6mm Depth 20mm. (Recommended)
Insert wall anchors into the holes.
2. Screw both wall brackets onto the wall;
3. Attach the sliding bar onto wall bracket;
4. Install the elbow to the wall, then connect the hose and shower head.

Please be careful during installation. Avoid scratching the shower set.

Due to our policy of continuous development, all designs and measurements are intended only as a guide and are subject to change without notice. Being hand made products they are subject to a size variance E&OE. This brochure is representative of the actual products at time of printing. Please confirm all particulars before purchase. Casa Lusso recommends having the product on site before commencing rough in.

IMPORTANT

Pressure & Temperature Requirements.

- * Hot and cold water inlet pressures should be equal.
- * Inlet pressure range: 100 – 800 kPa
- * New Regulation: -500 kPa maximum operating pressure at any outlet within a building. (Ref. AS/NZS 3500.1-2003, Clause 3.3.4)
- * Maximum hot water temperature: 80°C.