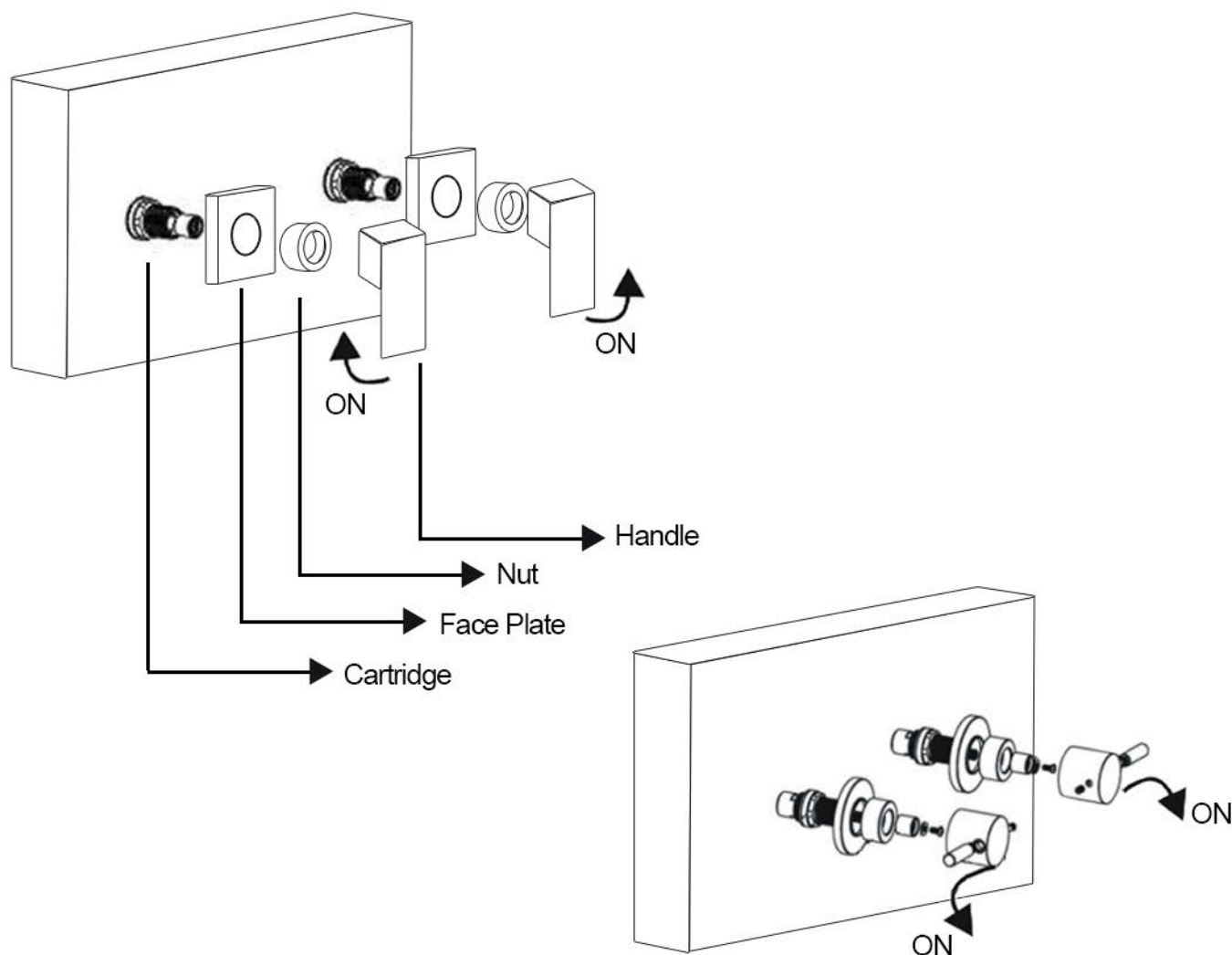


WALL TOP ASSEMBLIES

Congratulations for purchasing this quality wall top assemblies. Our product is manufactured to the highest quality under strict quality control procedures.



INSTALLATION INSTRUCTIONS

1. Install the cartridge onto the cartridge base in the wall and lock torque 10-12Nm;
2. Install the cartridge cover and lock torque 30-50Nm;
3. Install the face plate and nut;
4. Install the handle and lock the screw.

IMPORTANT

Pressure & Temperature Requirements.

- * Hot and cold water inlet pressures should be equal.
- * Inlet pressure range: 100 – 800 kPa
- * New Regulation: -500 kPa maximum operating pressure at any outlet within a building. (Ref. AS/NZS 3500.1-2003, Clause 3.3.4)
- * Maximum hot water temperature: 80°C.