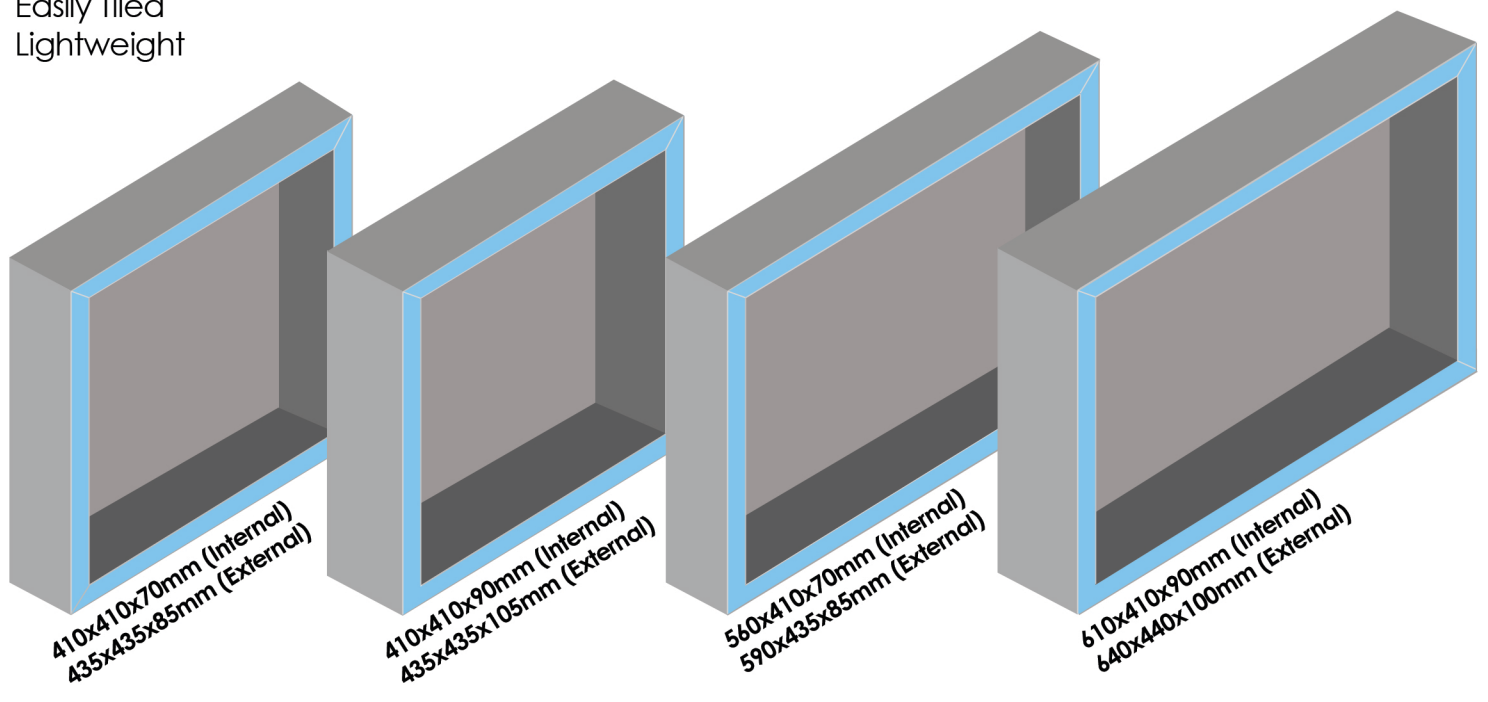


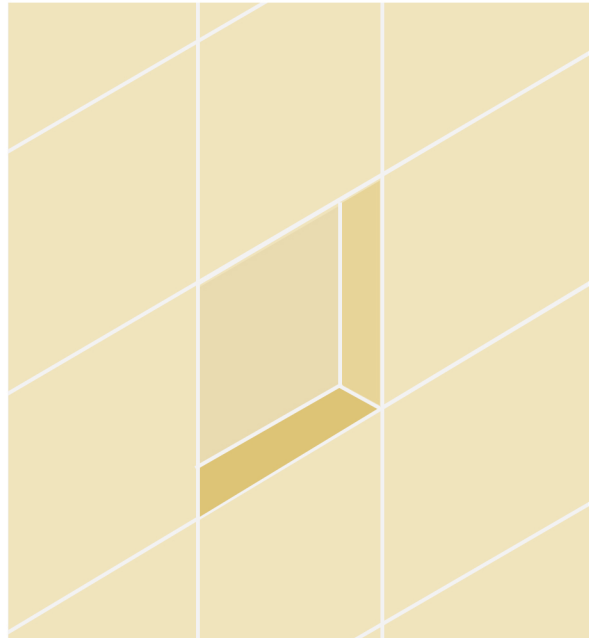
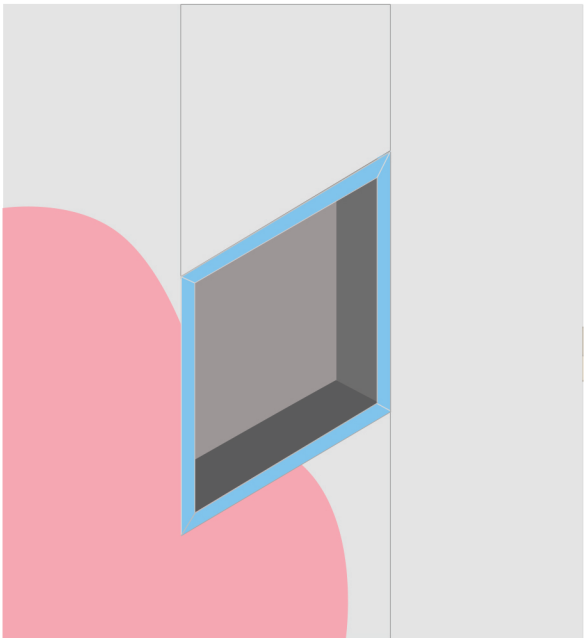
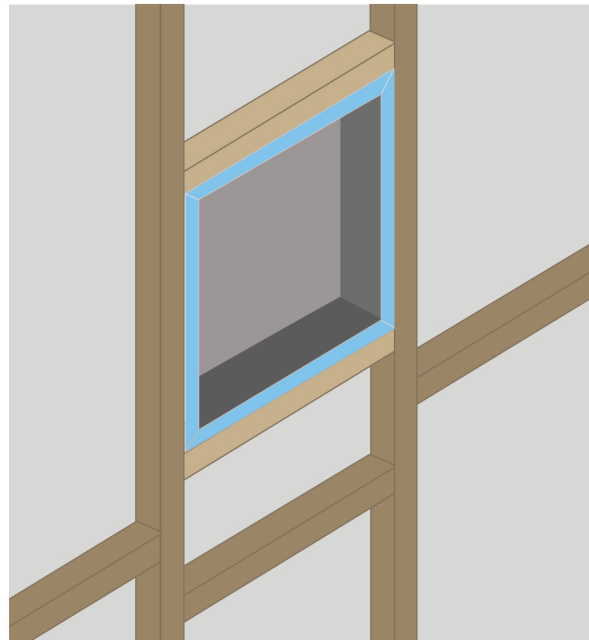
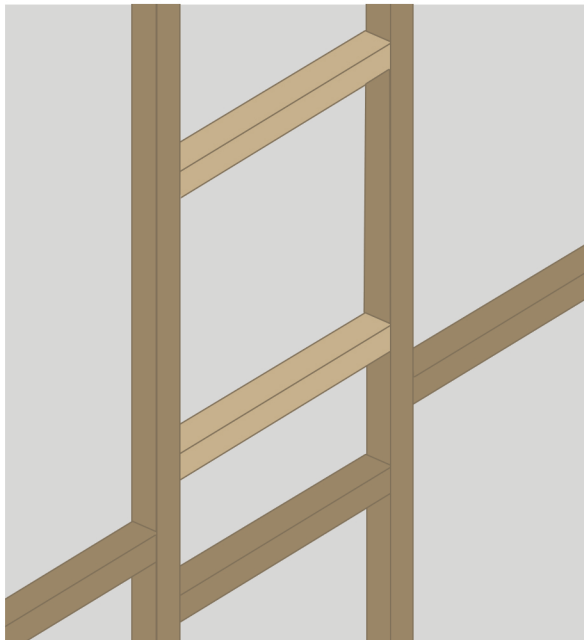
EziLay Shower Niche

EziLay Shower Niche's are manufactured from an extruded polystyrene core, layered on either side with a cement polymer mortar which has been embedded with a fibreglass mesh. Supplied as a flat pack to simply fold together and fix into your wall. Perfect for DIY.

Why use the EziLay?

- 100% Waterproof and perfect for wet rooms and showers
- No moisture build up
- Easily Tiled
- Lightweight





- 1) Install noggins to suit your selected Ezilay Shower Niche
- 2) Install Ezilay Shower Niche into the frame
- 3) Apply sheeting to wall and waterproof as per Australian Standard AS3740-2004
- 4) Tile as required

Please Note: Ezilay Shower Niche must be folded and glued prior to installation

Other Ezilay products include:

Shower Tray Systems:

Centre Drain - 900x900mm, 900x1200mm, 1200x1200mm or 900x1800mm

Offset Drain - 1000x1000mm, 1000x1200mm or 1000x1800mm

Shower Hobs: 975mm, 1275mm or 1875mm (Precut to 45° angle)

Visit our website for further information

www.casalusso.com.au

Due to our policy of continuous development, all designs and measurements are intended only as a guide and are subject to change without notice. Being hand made products they are subject to a size variance E&OE. This brochure is representative of the actual products at time of printing. Please confirm all particulars before purchase. Casa Lusso recommends having the product on site before commencing rough in.