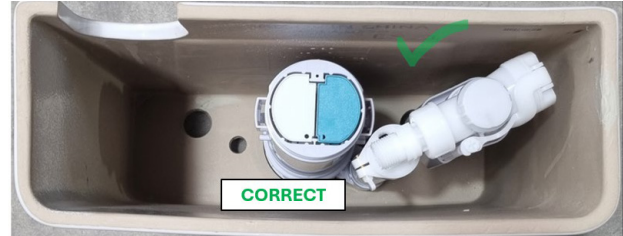
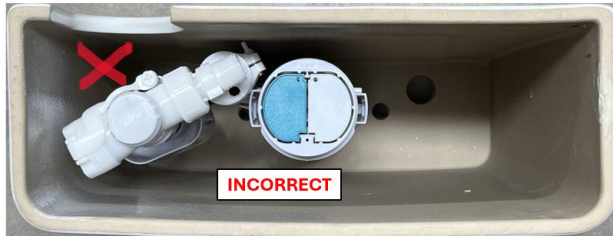


## Essence and Omega Cistern Valve Assembly

ESS1-W / OMG1-W

Turn the cistern valve assembly 180 degrees to fit the installation, ensuring the inlet valve is positioned on the right side of the cistern.

### Example



1. Unscrew the threaded ring underneath the cistern until it is completely loose.



5. Place the mechanism back into position.



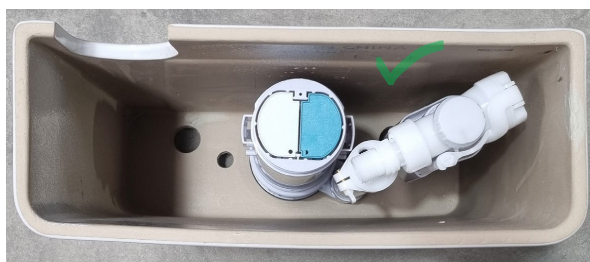
2. Keep the rubber seal in the same order.



6. Retighten the **threaded ring** at the bottom of the cistern, ensuring the rubber seal remains in the correct order.



3. Remove the cistern mechanism entirely from the cistern.



7. The process is now complete.



4. Rotate the cistern mechanism **180 degrees**.

FAILURE TO COMPLY WITH ANY OF THE ABOVE INSTRUCTIONS WILL VOID ALL WARRANTIES